

Overhead Secondary To Under-ground Meter Base Installation



Yazoo Valley EPA
"Strong on Service"

Customer Wiring Size

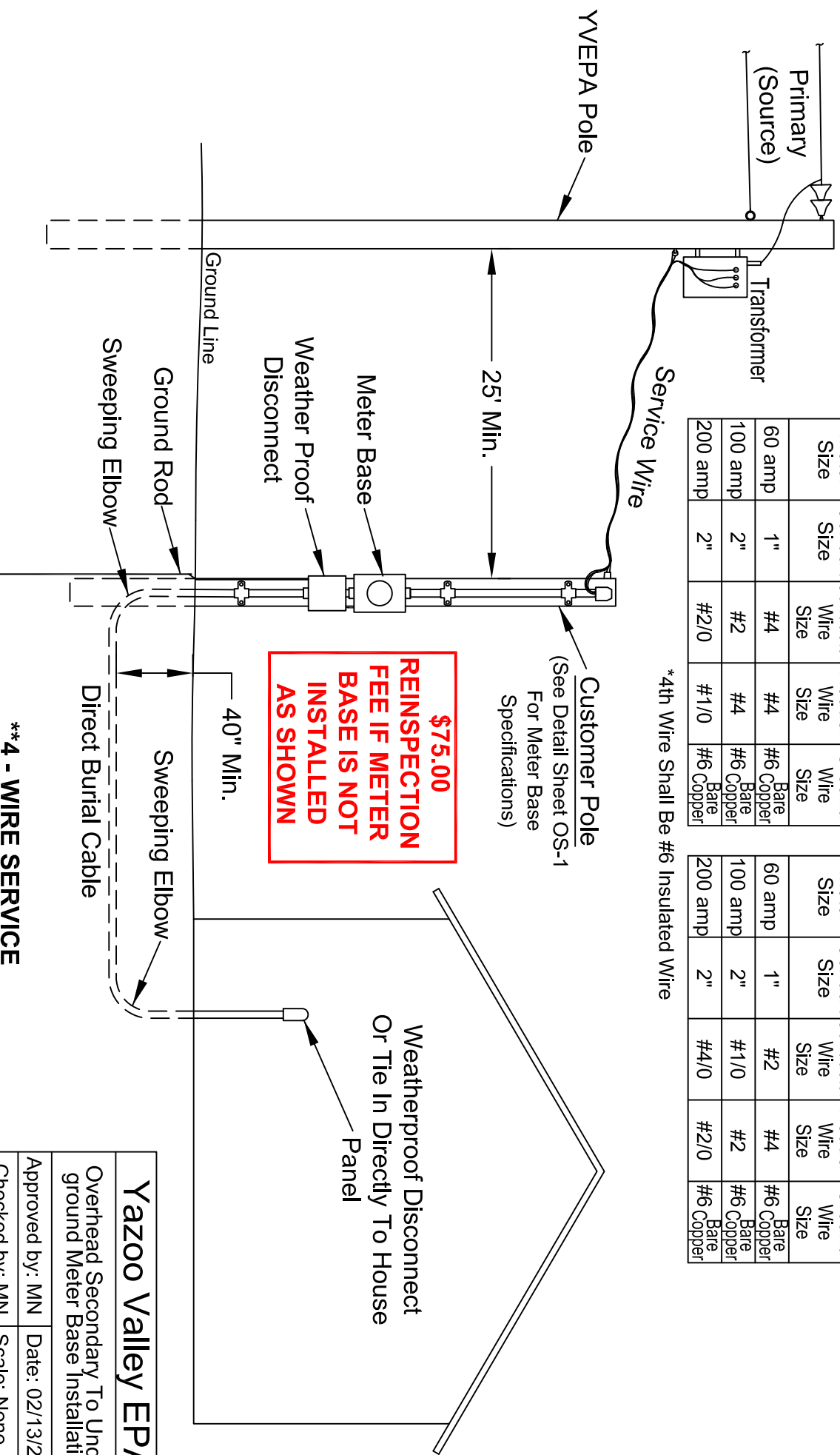
*****COPPER*****

Meter Size	Conduit Size	Conductor Wire Size	Neutral Wire Size	Ground Wire Size
60 amp	1"	#4	#4	#6 Bare Copper
100 amp	2"	#2	#4	#6 Bare Copper
200 amp	2"	#2/0	#1/0	#6 Bare Copper

*****ALUMINUM*****

Meter Size	Conduit Size	Conductor Wire Size	Neutral Wire Size	Ground Wire Size
60 amp	1"	#2	#4	#6 Bare Copper
100 amp	2"	#1/0	#2	#6 Bare Copper
200 amp	2"	#4/0	#2/0	#6 Bare Copper

*4th Wire Shall Be #6 Insulated Wire



\$75.00
REINSPECTION
FEE IF METER
BASE IS NOT
INSTALLED
AS SHOWN

****4 - WIRE SERVICE**
ENTRANCE REQ'D. FOR
MOBILE HOMES AND CAMPERS

Yazoo Valley EPA	
Overhead Secondary To Under-ground Meter Base Installation	
Approved by: MN	Date: 02/13/2015
Checked by: MN	Scale: None
Drawn by: MN	